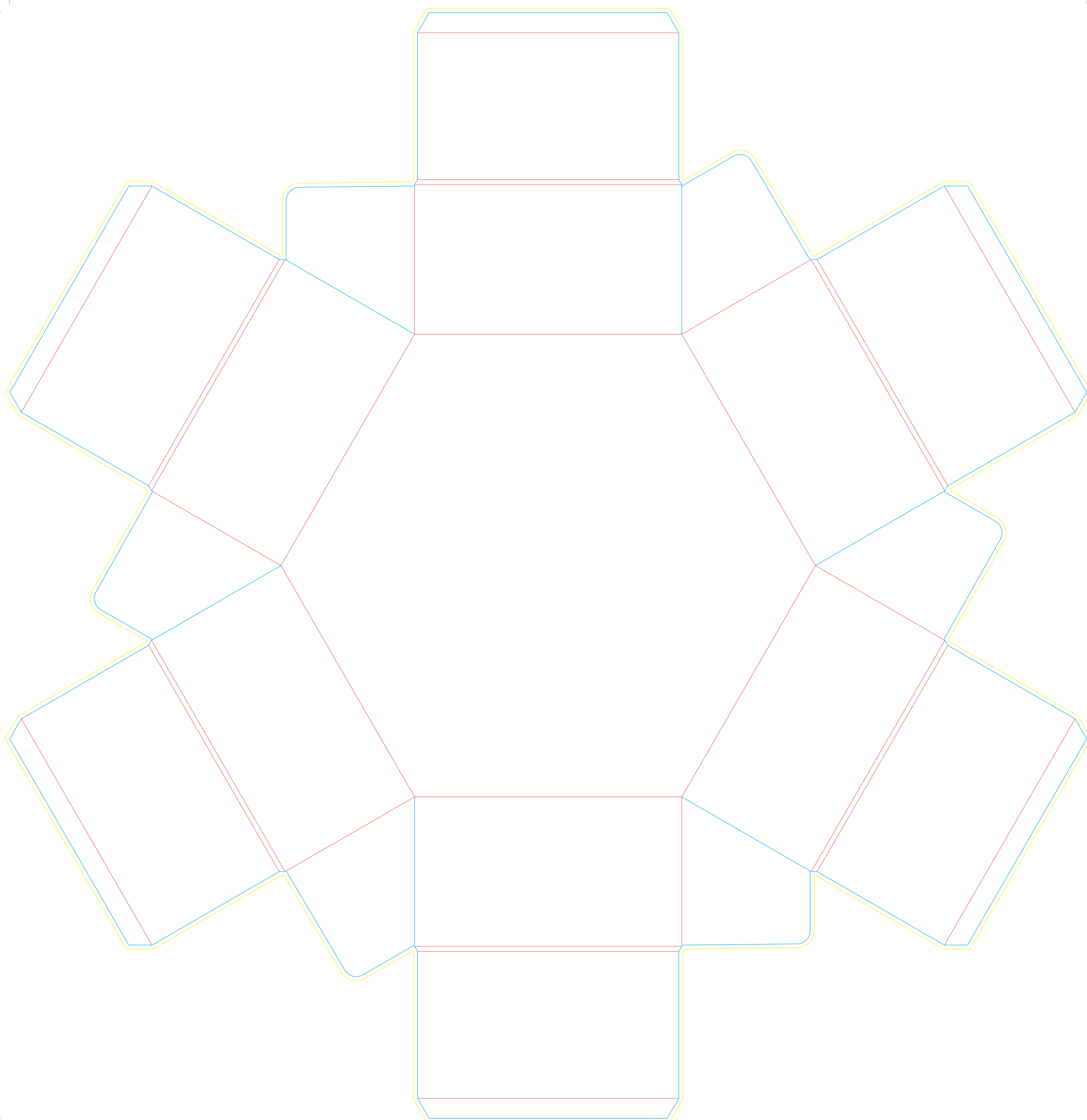


Dirección de canal

BASE






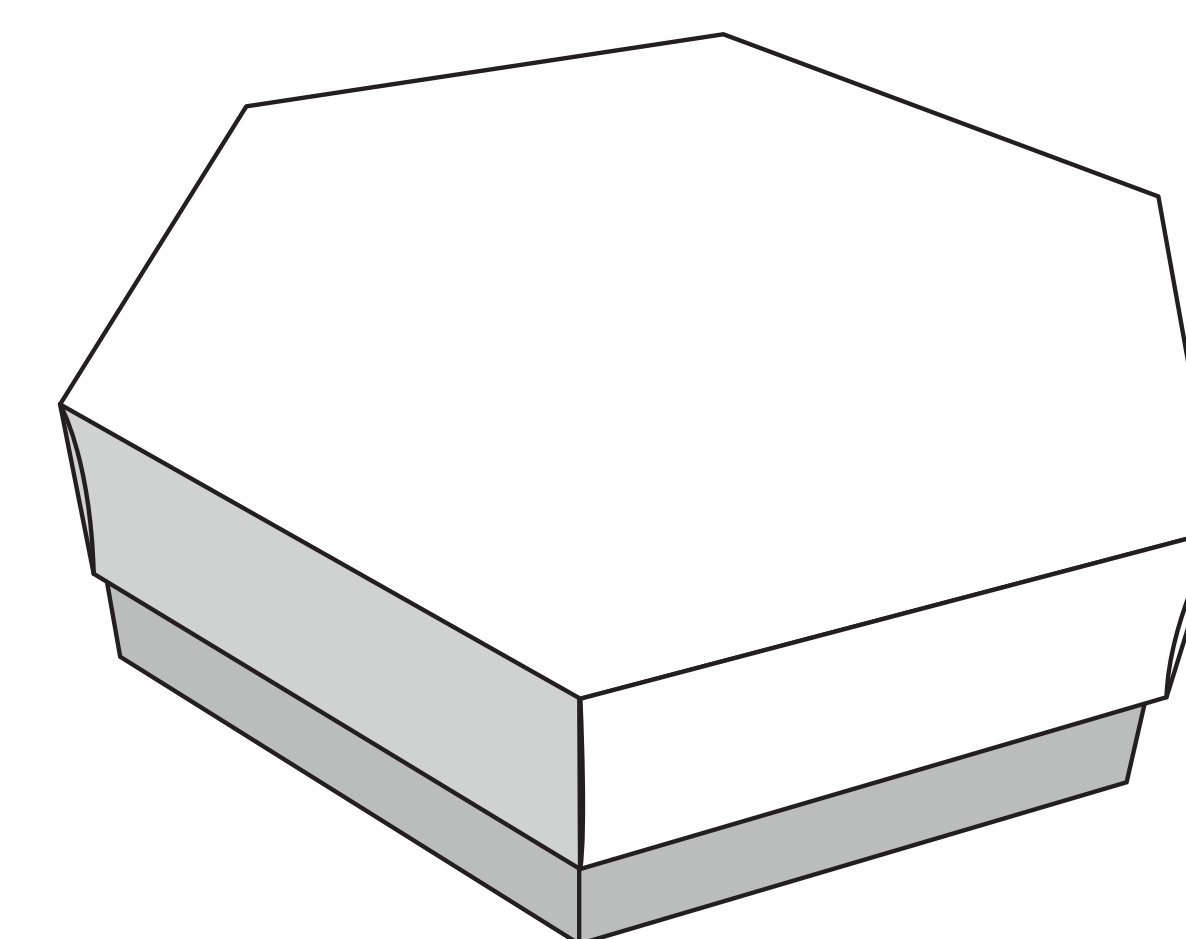
i Caja hexagonal con tapa M

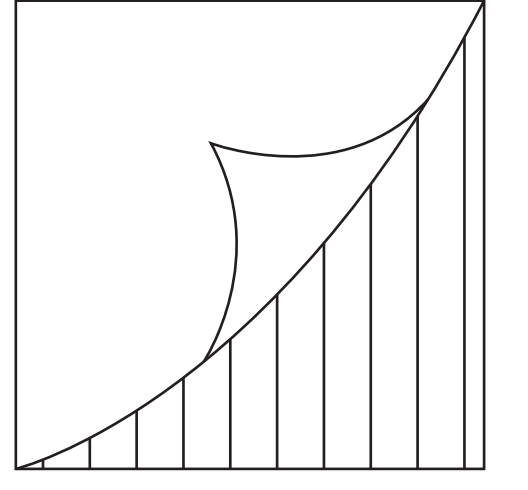
El documento debe incluir un sangrado de 3 mm e imágenes a 300 ppp.

Medidas interiores: 400x346x110mm

Medidas exteriores: 415x360x120mm

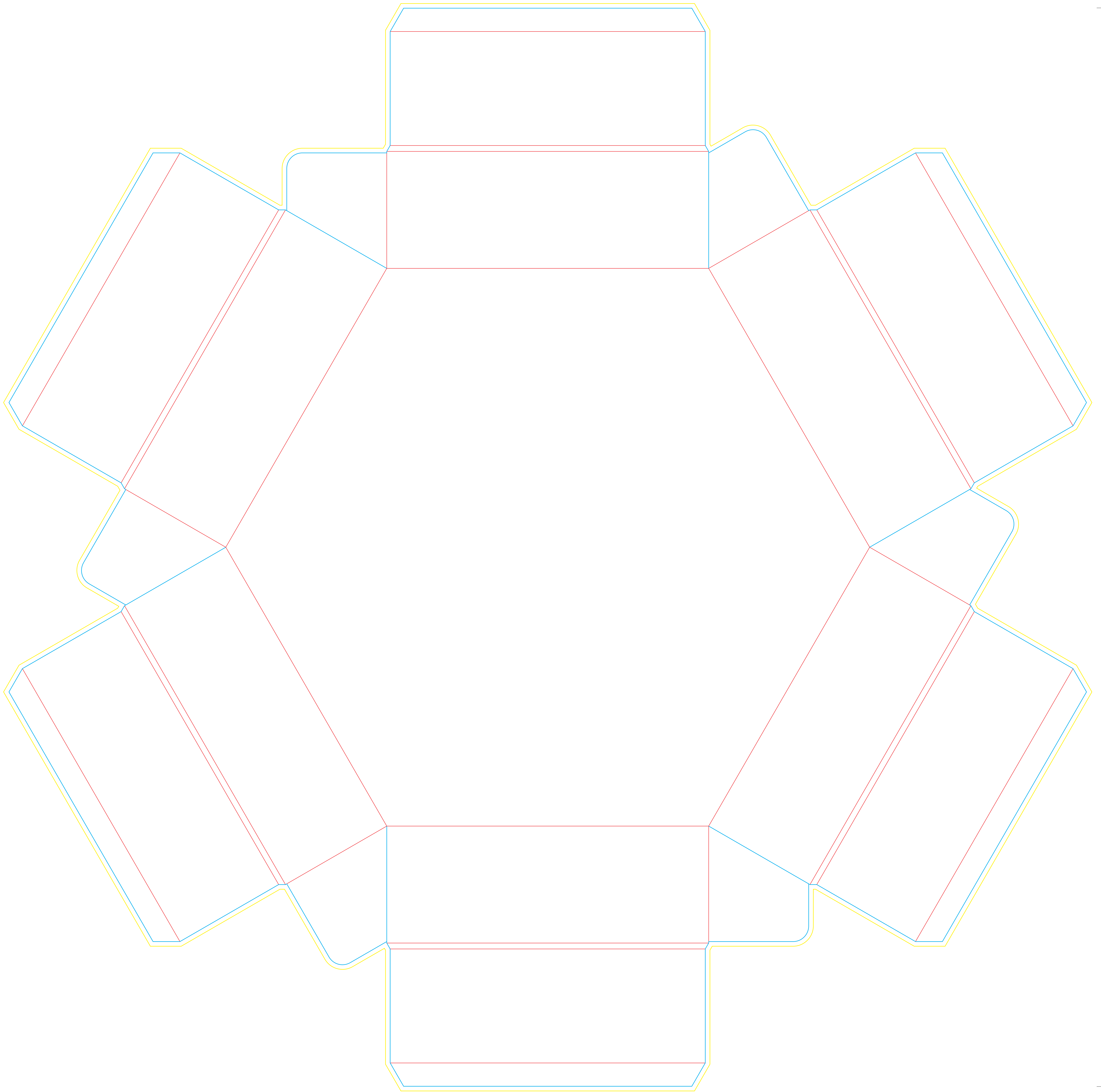
-  Sangrado necesario.
-  Zona máxima de diseño.
-  Hendidos.








Dirección de canal

TAPA



i Caja hexagonal con tapa M

El documento debe incluir un sangrado de 3 mm e imágenes a 300 ppp.

-  Sangrado necesario.
-  Zona máxima de diseño.
-  Hendidos.