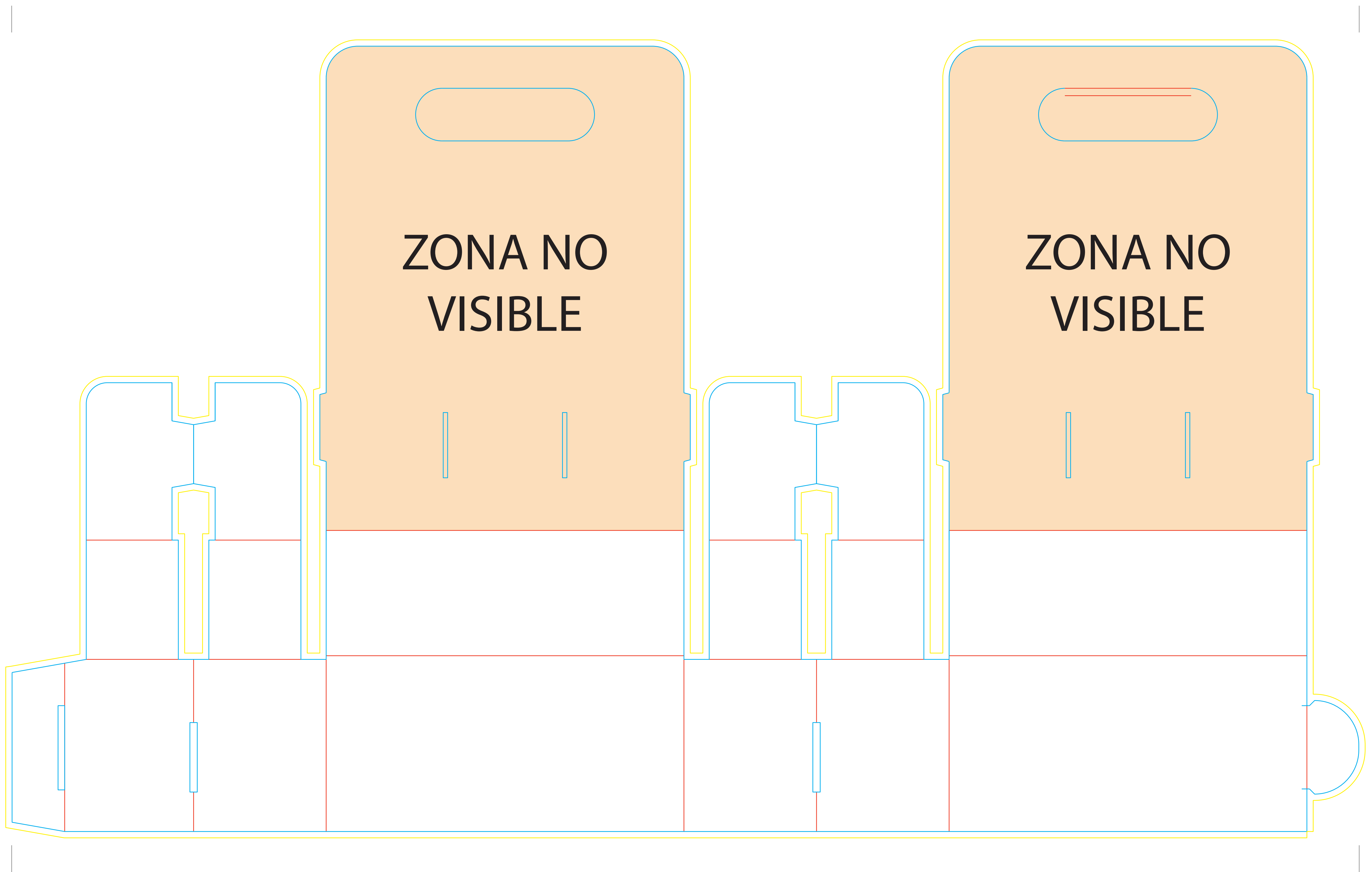





CAJA CERVEZA (6 BOTELLAS) S

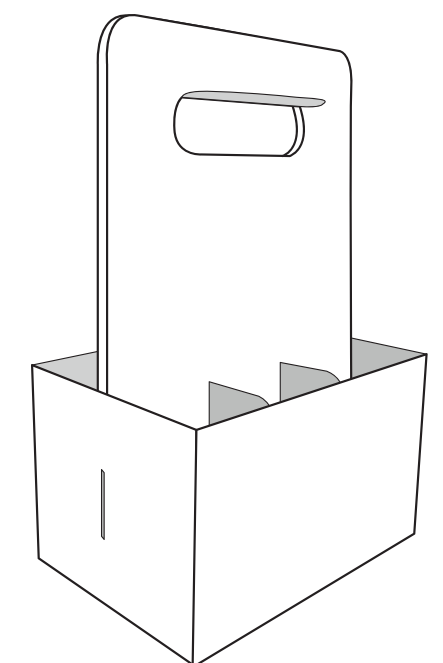


i CAJA CERVEZA 6 BOTELLAS (BOTELLÍN)

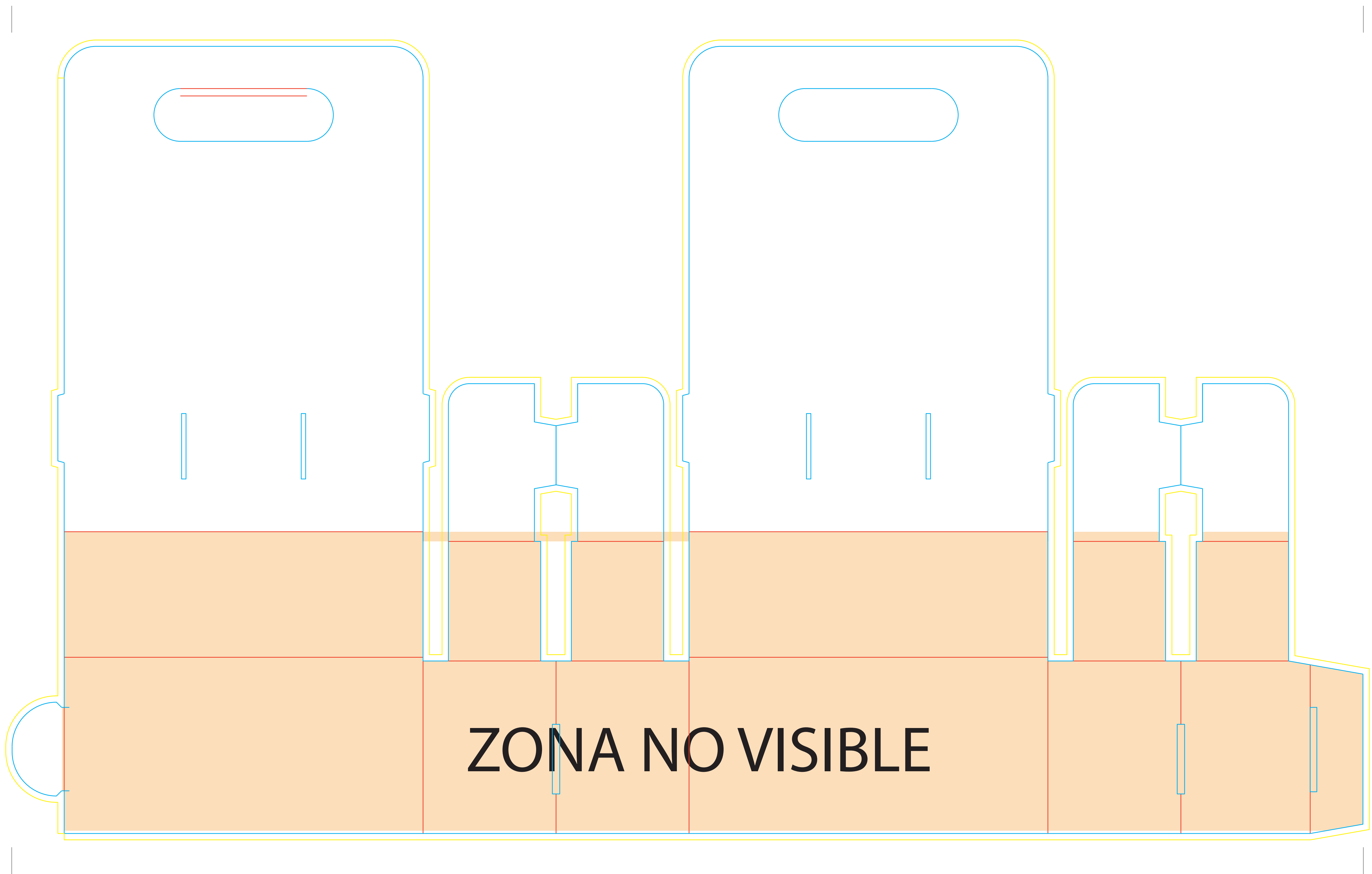
El documento debe incluir un sangrado de 3 mm e imágenes a 300 ppp.

-  Sangrado necesario.
-  Zona máxima de diseño.
-  Hendidos.

IMPRESIÓN A UNA CARA






CAJA CERVEZA (6 BOTELLAS) S



i CAJA CERVEZA 6 BOTELLAS (BOTELLÍN)

El documento debe incluir un sangrado de 3 mm e imágenes a 300 ppp.

-  Sangrado necesario.
-  Zona máxima de diseño.
-  Hendidos.

IMPRESIÓN A DOS CARAS

